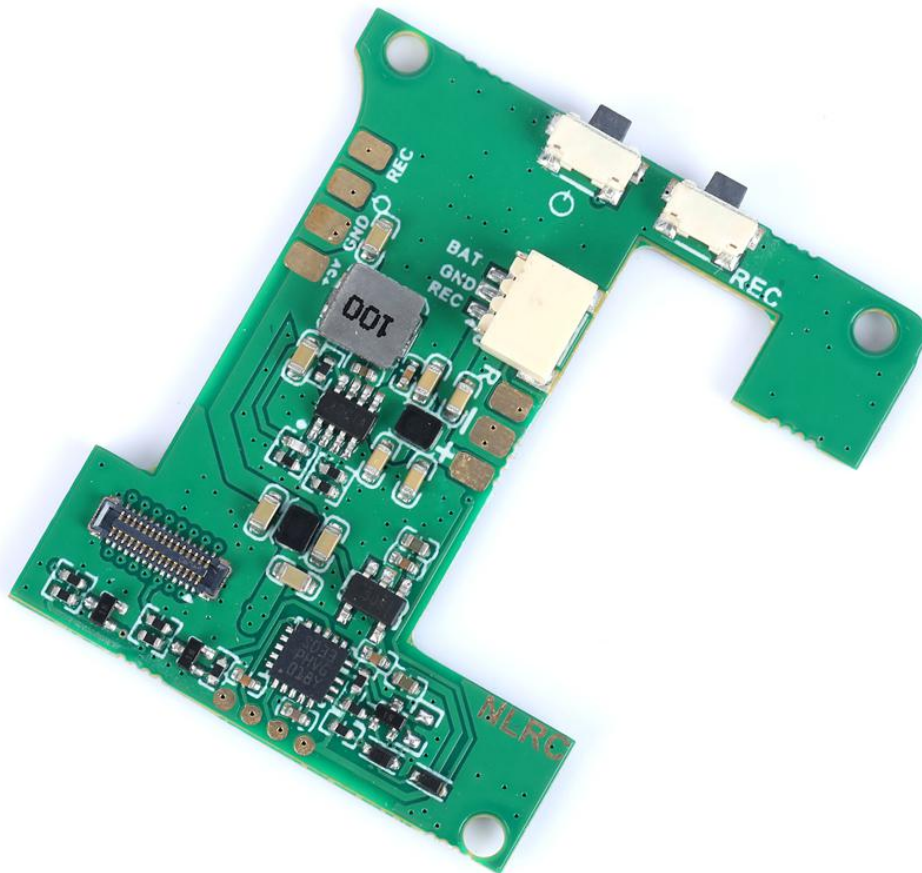


# NameLessRC Star BEC Module for Gopro8

## User Manual

**This BEC board fits for GoPro HERO8.**



### **Attention!**

- Please make sure all functions on naked GoProp are normal.
- Please DO NOT plugged in the 3-pins power cables when powering on.

It may cause the FC or GoPro mainboard to burn out.

## Features:

- The NLRC BEC is specially designed for Naked GoPro HERO which weighs about 2.4g, makes your naked GoPro lighter and easier to install on your drone.
- With the pluggable connector, which is easier to connect with your flight controller for power supply and recording.
- Supports 2-6S power in.
- Automatic power-on function.
- Output voltage is 5V@2.1A, avoid the accident of power off which is caused by the insufficient power supply for the FC board.
- Both support LED and BUZZER port. Pad is available for pilots to control the GoPro recording via the radio transmitter.
- Bypassed the Pinio remap and FC doesn't need to remap.
- Integrated GoPro stock buttons, Power/Mode Button and Record Button
- Integrated GoPro stock LED to know the status of the camera.

## Specification:

Item: NameLessRC Star Module

Weight: 2.4g

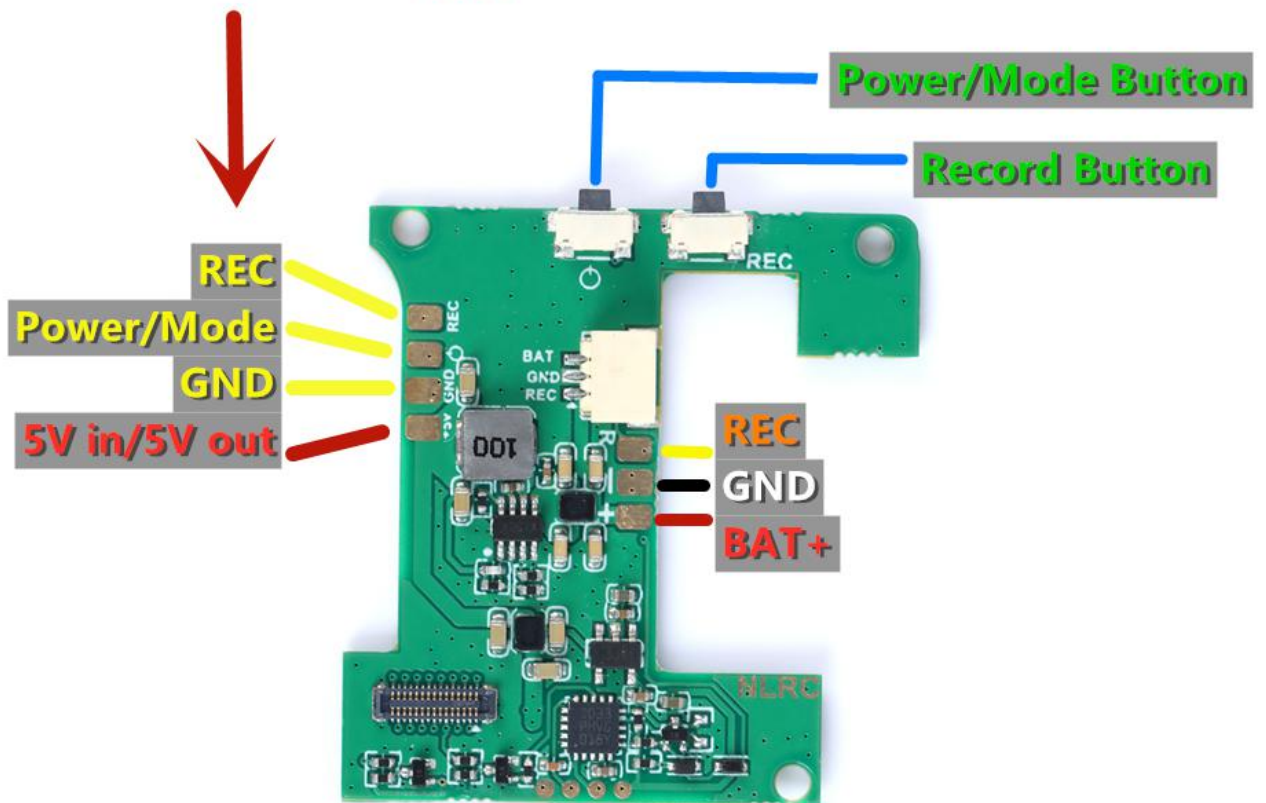
Output: 5V@2.1A

Input Voltage: 2-6S

Connector: PH 1.0 3P Connector

# Pins Assignment:

This part is used for external buttons and power supply.



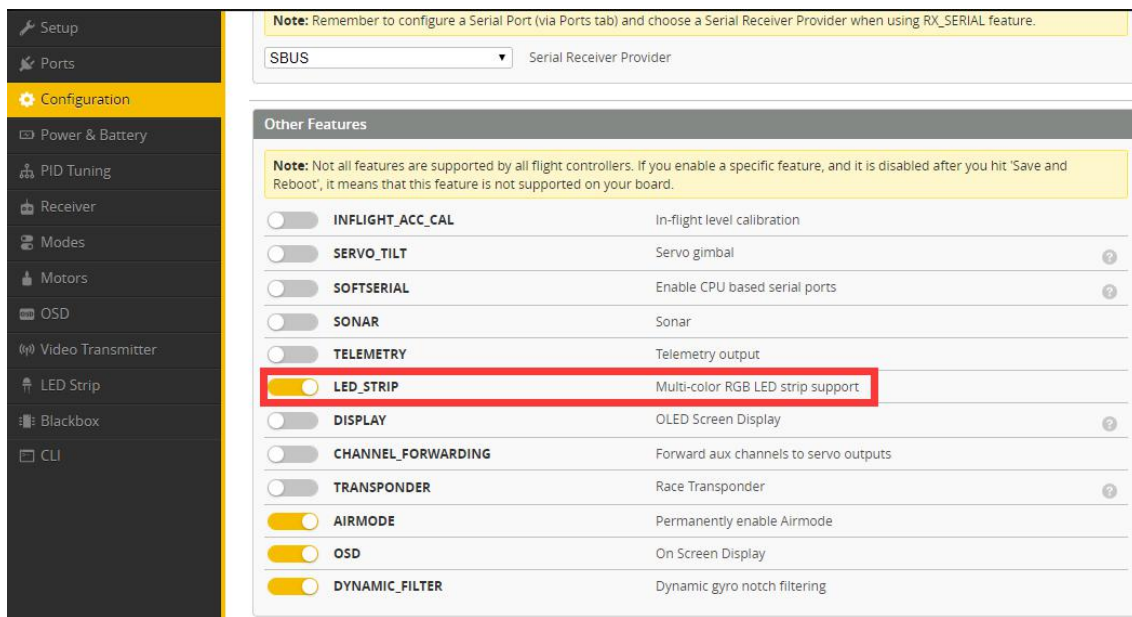
# Set up & Control:

## 1. Start/Stop recording via FC' s LED function (RECOMMEND):

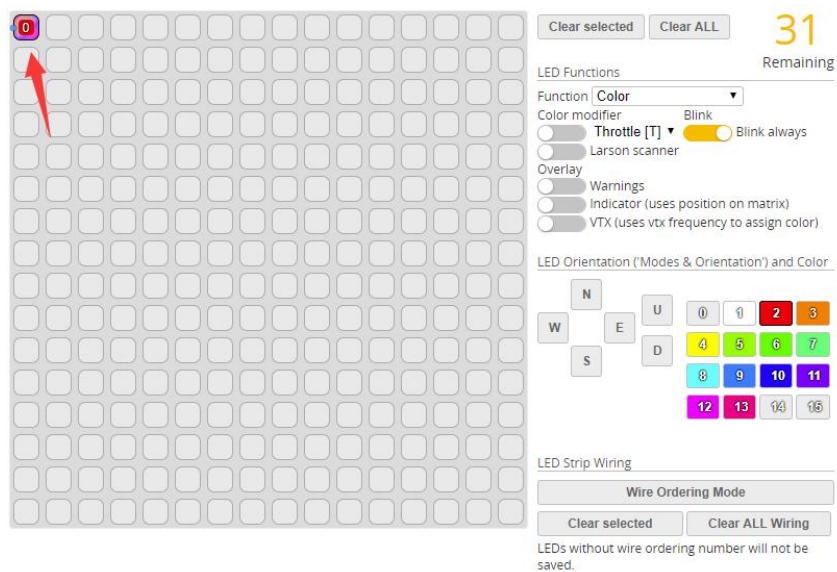
GoPro' s default mode is recording mode. REC should be connect with LED pad.

### FC' s set up:

-Switch on LED\_STRIP.



-Set up at least 1 LED.



**-Add range on LEDLOW channel.**



**Control**(YouTube <https://youtu.be/Zf1dvslcFY>):

**-Plug in battery and wait for all modules power on.**

**-Switch on LED channel for at least 5 secs then switch off. GoPro will start recording. LED function is still available during flight.**

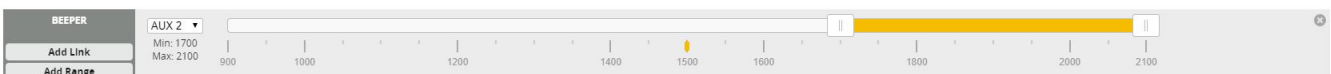
**-Repeat step 2 to stop recording. Please wait at least 15 secs between start/stop recording.**

**2.Start/Stop recording via FC' s BUZZER function:**

REC should be connect with BUZ- pad.

**FC' s set up:**

**-Add range on BUZZER channel.**



**Control**(YouTube <https://youtu.be/rji8USzdcc0>):

**-Plug in battery and wait for all modules power on.**

**-Switch on BUZZER channel for at least 8 secs then switch off. GoPro will start recording. BUZZER function is still available during flight.**

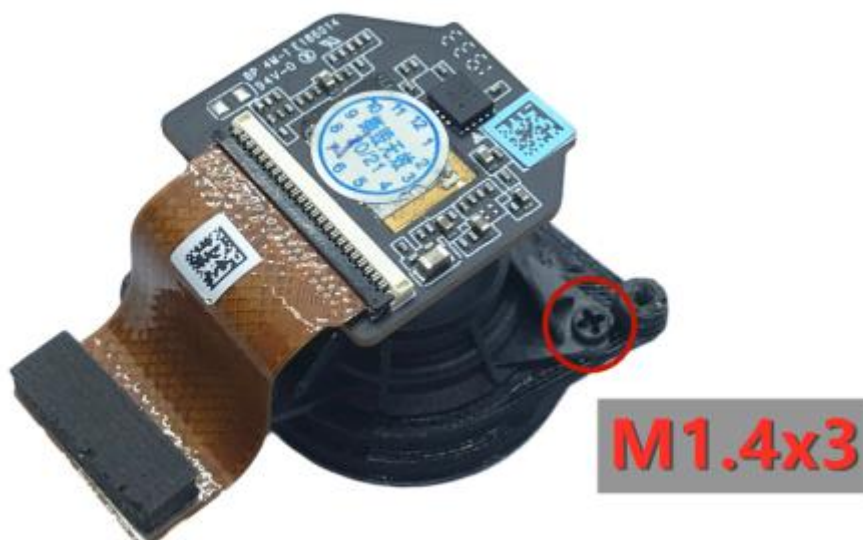
**-Repeat step 2 to stop recording. Please wait at least 15 secs between start/stop recording.**

## Install in case:

-Cut off the extra parts



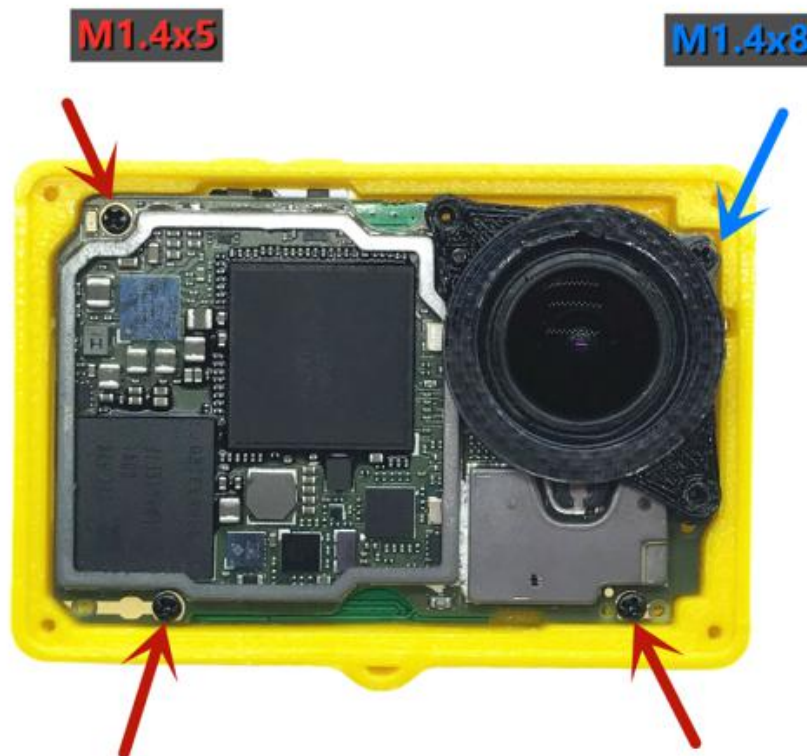
-Install the lens mount and tighten the screws



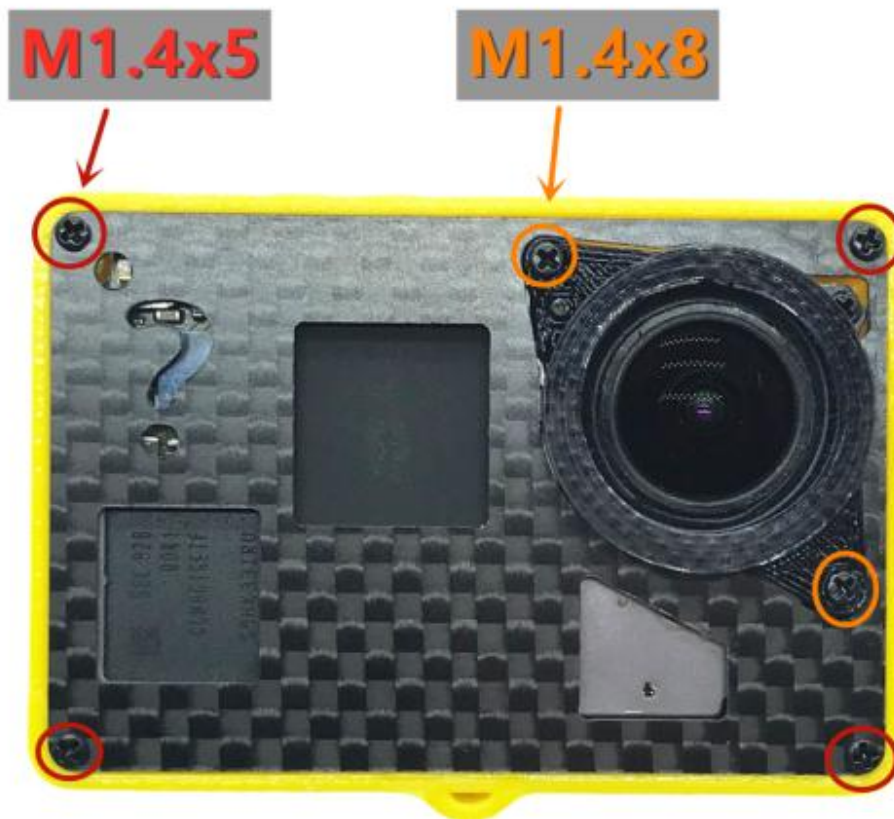
-Install the lens and BEC board



-Install the shell and tighten the screws



-Install the carbon board



-Install the lens protection back cover





-Support Mavic2 Zoom ND filter and general GoPro filter

