

FullSpeed X-Charger Module

User Manual



Disclaimer:

DIY and Good soldering skills are requirement. We are not responsible any risk during modify, incorrect modify may destroy the product and lose warranty opportunity.

Description:

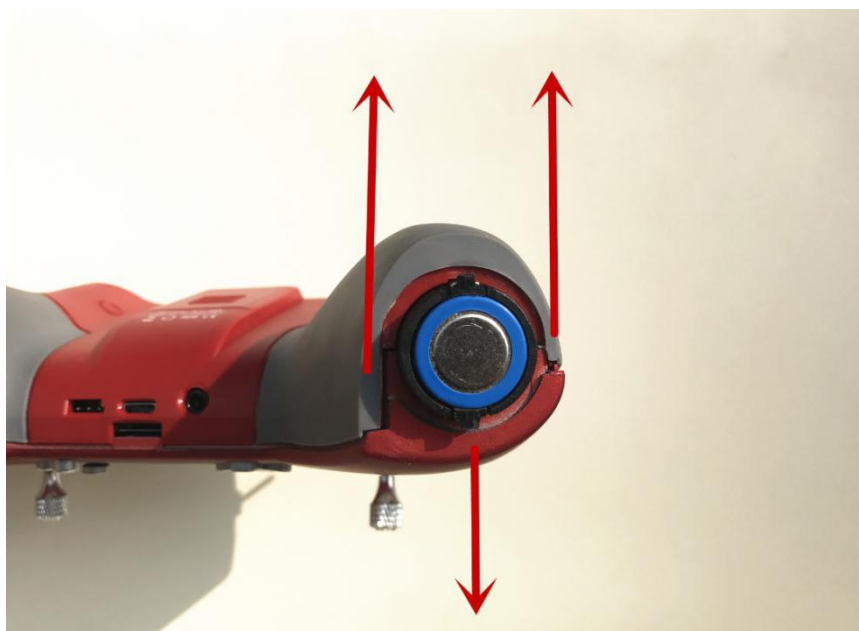
The FullSpeed X-Charger Module is completely compatible with FrSky X-Lite 18500/18650 battery set. Only one USB charging cable is needed to connect to the Xlite Micro USB port for the charging function after you finished the module installation. You don't need to take the batteries out anymore for the charging.

Installation:

-Remove the screws on both sides at the bottom of X-lite controller. (As the picture shown below)

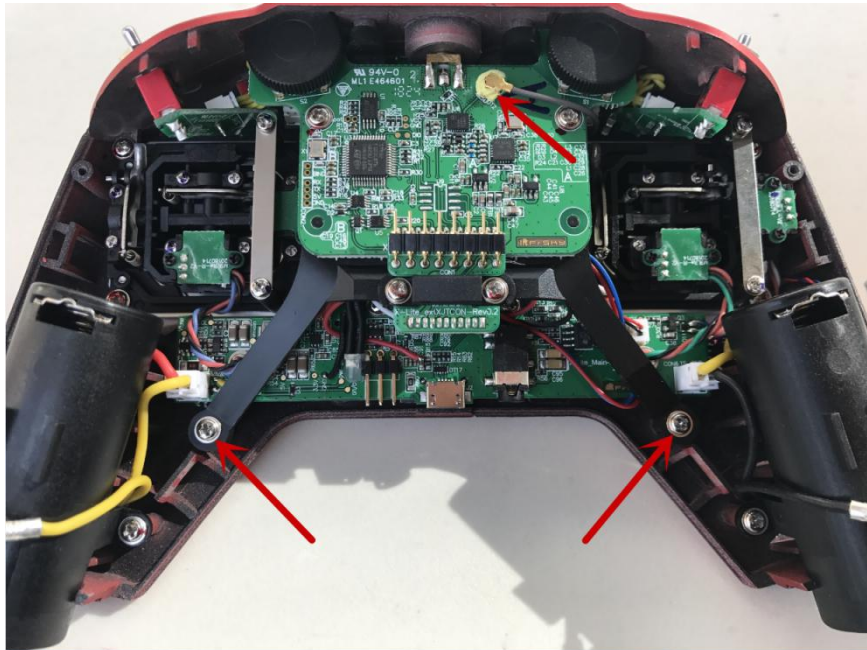


-Open the shell. (take out the SD card first then open the shell from the bottom of the battery compartment)

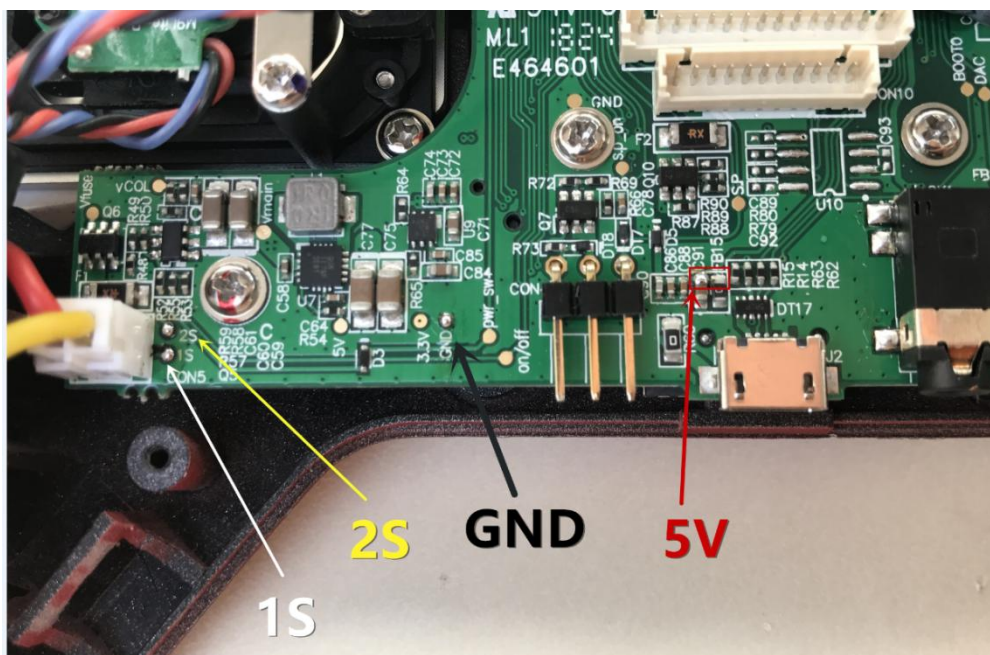


-Release the screws and the antenna to remove the frame.

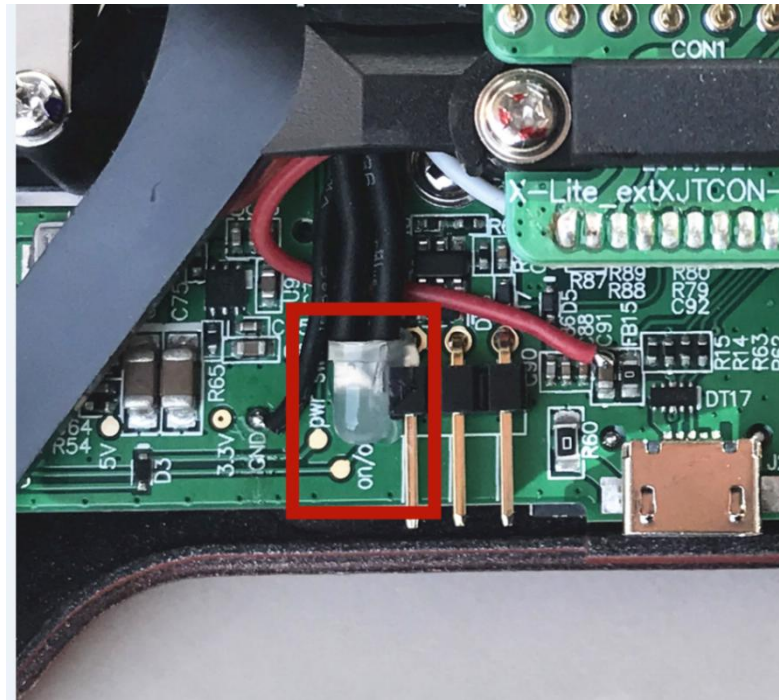
(As the picture shown below)



-Solder the wires on the X-Charger Module then solder the corresponding port wires to the X-lite controller' s main board. (1S port to 1S port, 2S to 2S, GND & 5V ports to the ports shown in the picture below)



-The charging indicating light can be installed selectively.
(we recommend to install it at the position shown in the picture below)



Attention

Please use high quality USB wire to get the best charging performance.

The following situations will occur after installing the X-Charger. (no effect for the controller' s normal features)

- The X-lite controller can' t be turned on while it is charging through USB. It can be turned on after unplugging the USB plug.**
- There will be options to select 'USB Joystick' / 'USB Storage' when the charge USB plug is connecting with the X-lite controller which is on power-on state. Please select 'USB Storage' so you can charge the X-lite controller and enjoy the flight at the same time.**